

4

3

2

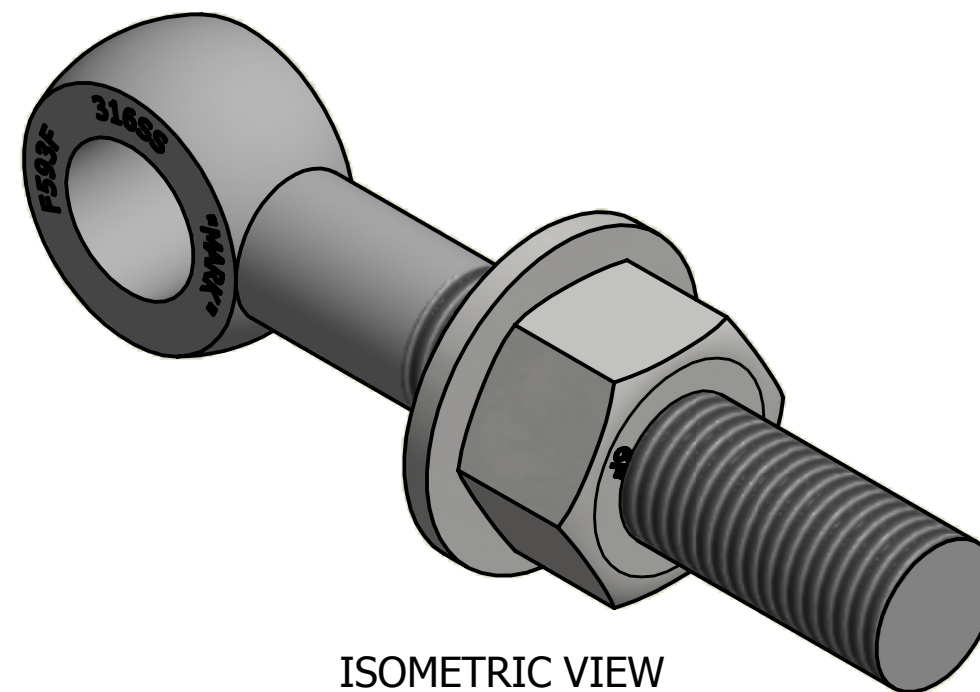
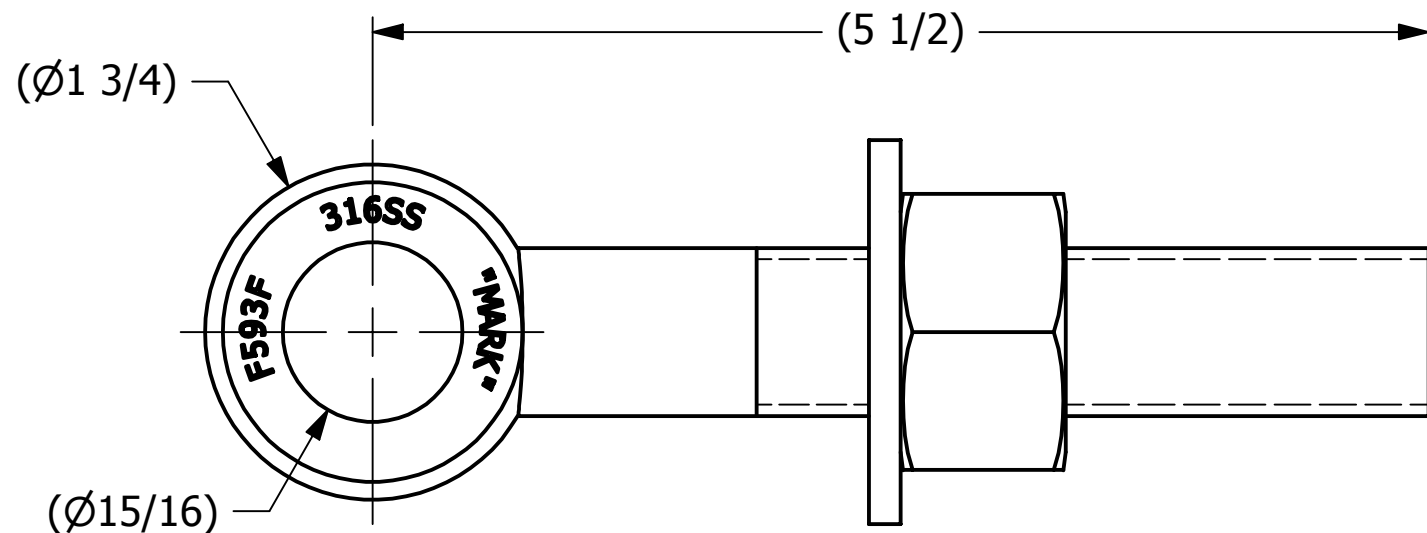
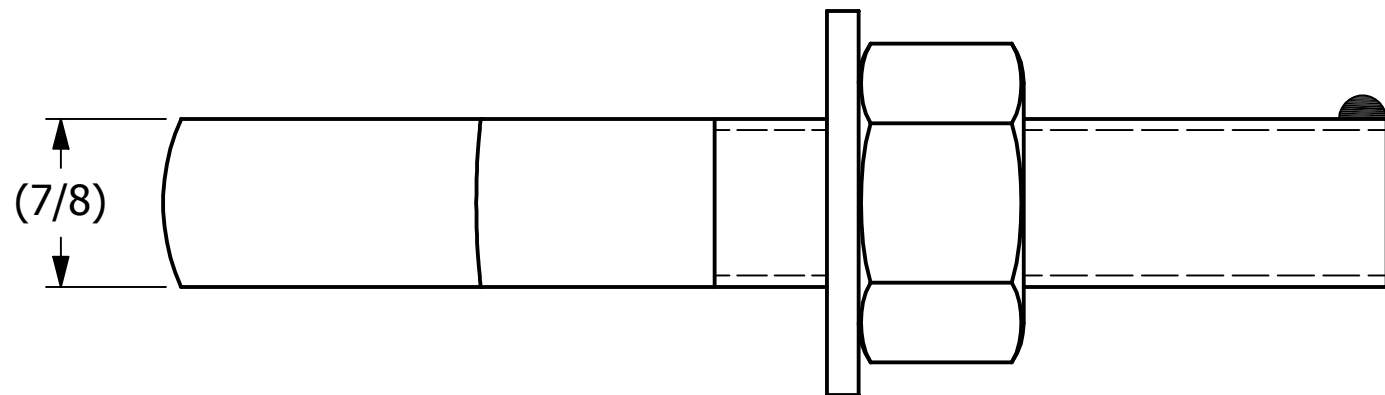
1

B

B

SALES DRAWING

SALES DRAWING



ISOMETRIC VIEW

A	RJP	10-30-15	EBR7855S6 WAS EBR7855S6R, WASH78S6 WAS WASH78S4, REMOVED A16204	
REV	BY	DATE	DESCRIPTION	
<b>SALCO PRODUCTS, INC.</b>				
PART NAME: <b>EYEBOLT ASSEMBLY 7/8"X5 1/2"</b>				
MATERIAL: <b>316 SS</b>				
PROJECT #:		SHEET #: <b>1 OF 1</b>		SCALE: <b>1:1</b>
DRAWING #:		PART #:		
<b>B17192</b>		<b>EB7855XAS6</b>		

UNLESS OTHERWISE SPECIFIED DIMENSIONAL TOLERANCES FRACTIONAL: ±1/16 X.XX: ±.03 X.XXX: ±.015 ANGULAR: ±1° DEBURR ALL SHARP EDGES. ALL MACHINED SURFACES TO HAVE A 125 RMS FINISH UNLESS NOTED OTHERWISE. THIRD ANGLE PROJECTION	DRAWN BY:	CHL
	CHECKED BY:	ACC
	PROTOTYPE BY:	CHL
	PROTOTYPE DATE:	8/12/2002
	APPROVED FOR PRODUCTION BY:	ACC
	PRODUCTION DATE:	8/12/2002

THIS PRINT, PROPERTY OF SALCO PRODUCTS INC., CONTAINS PROPRIETARY INFORMATION AND MUST NOT BE COPIED, REPRODUCED, OR USED DETRIMENTALLY TO OUR INTEREST.

4

3

2

1

A

A